

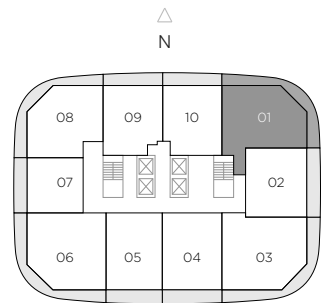
Brickell Heights



RESIDENCE 01

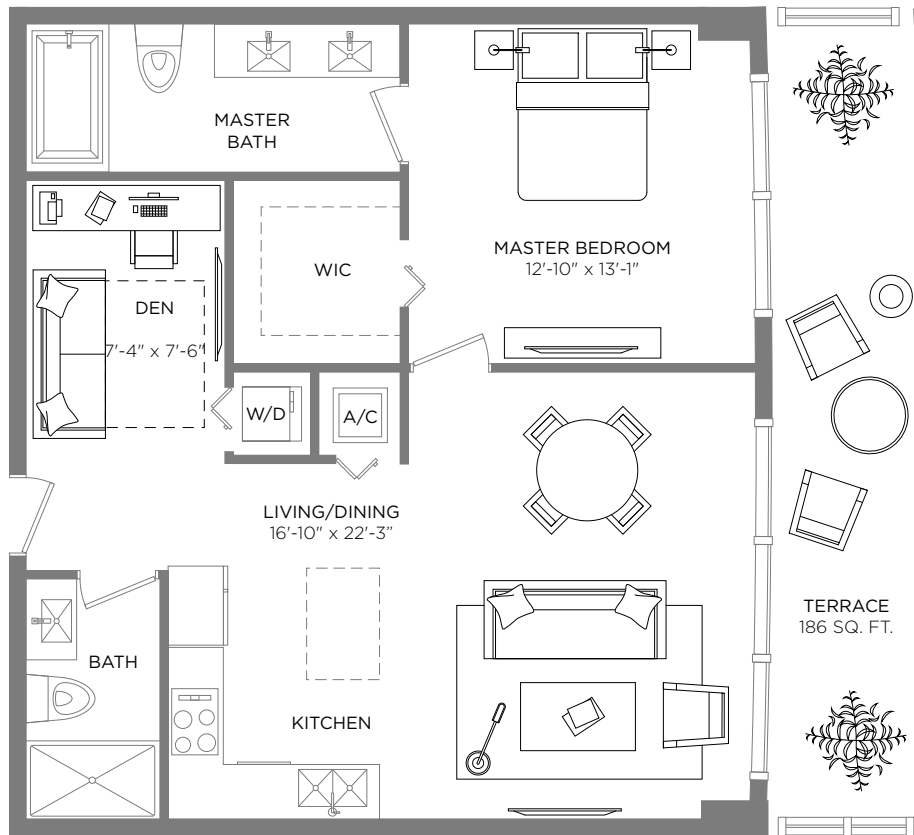
2 BEDROOMS / 2 BATHS

A/C INTERIOR AREA	1,192 SQ.FT.	110.74 SQ.M.
TERRACE AREA	347 SQ.FT.	32.24 SQ.M.
TOTAL RESIDENCE	1,539 SQ.FT.	142.98 SQ.M.



Stated dimensions are measured to the exterior boundaries of the exterior walls and the centerline of interior demising walls and in fact vary from the dimensions that would be determined by using the description and definition of the "Unit" set forth in the Declaration (which generally only includes the interior airspace between the perimeter walls and excludes interior structural components). For your reference, the area of the Unit, determined in accordance with those defined unit boundaries, is + or - 1,078 sq. ft. for units 01 Note that measurements of rooms set forth on this floor plan are generally taken at the greatest points of each given room (as if the room were a perfect rectangle), without regard for any cutouts. Accordingly, the area of the actual room will typically be smaller than the product obtained by multiplying the stated length times width. All dimensions are approximate and may vary with actual construction, and all floor plans and development plans are subject to change.

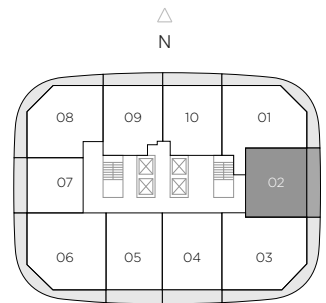
Brickell Heights



RESIDENCE 02

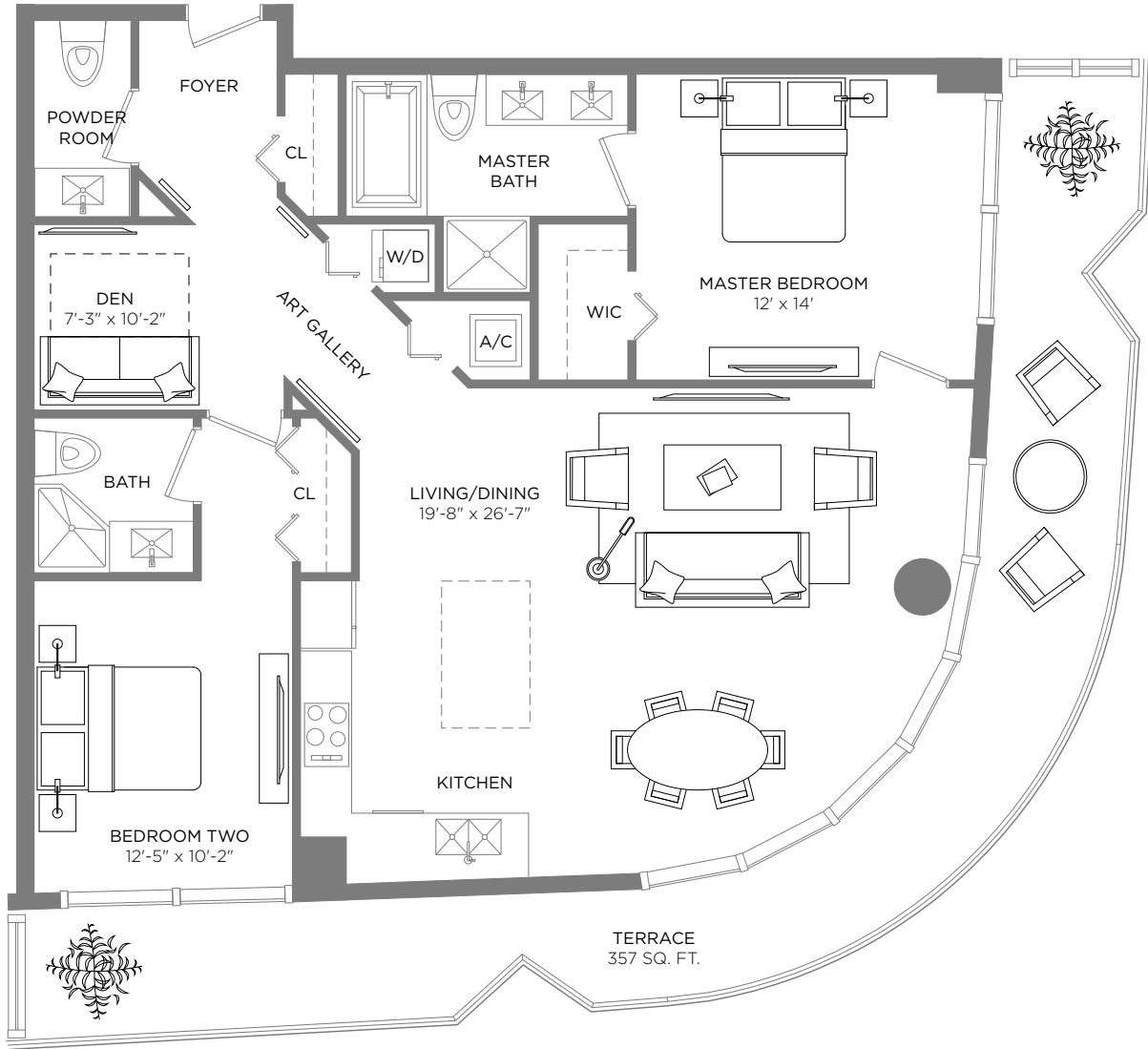
1 BEDROOM / 2 BATHS + DEN

A/C INTERIOR AREA	880 SQ.FT.	81.76 SQ.M.
TERRACE AREA	186 SQ.FT.	17.28 SQ.M.
TOTAL RESIDENCE	1,066 SQ.FT.	99.04 SQ.M.



Stated dimensions are measured to the exterior boundaries of the exterior walls and the centerline of interior demising walls and in fact vary from the dimensions that would be determined by using the description and definition of the "Unit" set forth in the Declaration (which generally only includes the interior airspace between the perimeter walls and excludes interior structural components). For your reference, the area of the Unit, determined in accordance with those defined unit boundaries, is + or - 826 sq. ft. for units 02 Note that measurements of rooms set forth on this floor plan are generally taken at the greatest points of each given room (as if the room were a perfect rectangle), without regard for any cutouts. Accordingly, the area of the actual room will typically be smaller than the product obtained by multiplying the stated length times width. All dimensions are approximate and may vary with actual construction, and all floor plans and development plans are subject to change.

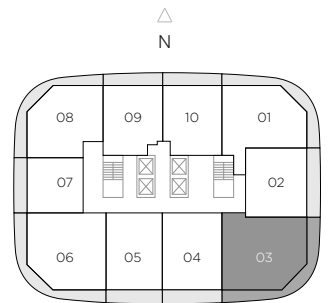
Brickell Heights



RESIDENCE 03

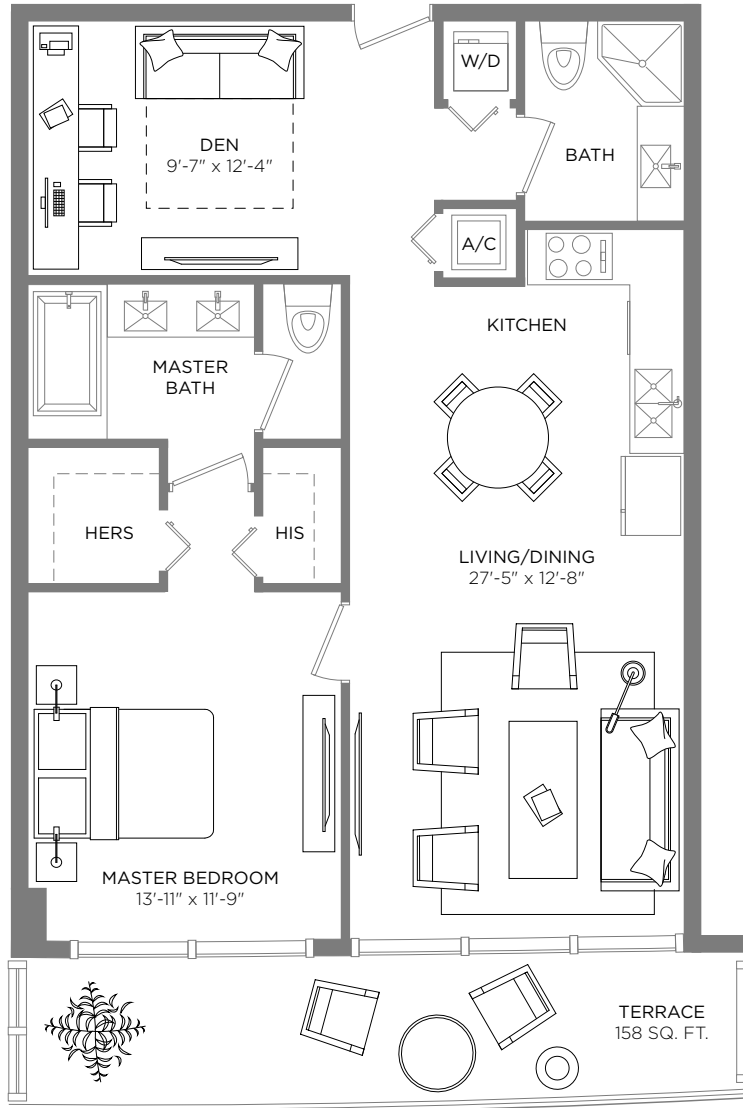
2 BEDROOMS / 2.5 BATHS + DEN

A/C INTERIOR AREA	1,275 SQ.FT.	118.45 SQ.M.
TERRACE AREA	357 SQ.FT.	33.17 SQ.M.
TOTAL RESIDENCE	1,632 SQ.FT.	151.62 SQ.M.



Stated dimensions are measured to the exterior boundaries of the exterior walls and the centerline of interior demising walls and in fact vary from the dimensions that would be determined by using the description and definition of the "Unit" set forth in the Declaration (which generally only includes the interior airspace between the perimeter walls and excludes interior structural components). For your reference, the area of the Unit, determined in accordance with those defined unit boundaries, is + or - 1,150 sq. ft. for units 03 Note that measurements of rooms set forth on this floor plan are generally taken at the greatest points of each given room (as if the room were a perfect rectangle), without regard for any cutouts. Accordingly, the area of the actual room will typically be smaller than the product obtained by multiplying the stated length times width. All dimensions are approximate and may vary with actual construction, and all floor plans and development plans are subject to change.

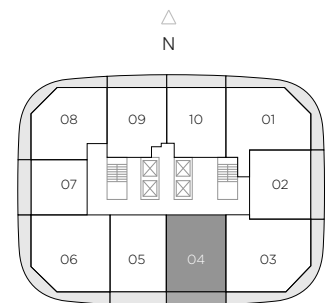
Brickell Heights



RESIDENCE 04

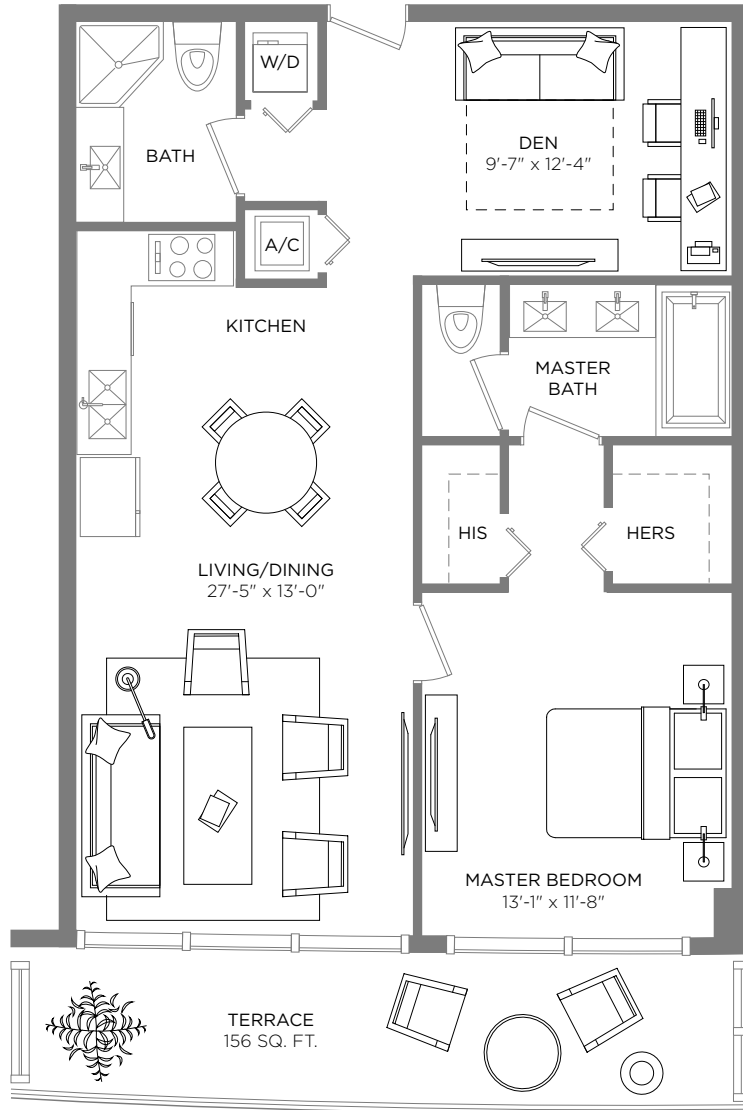
1 BEDROOM / 2 BATHS + DEN

A/C INTERIOR AREA	960 SQ.FT.	89.19 SQ.M.
TERRACE AREA	158 SQ.FT.	14.68 SQ.M.
TOTAL RESIDENCE	1,118 SQ.FT.	103.87 SQ.M.



Stated dimensions are measured to the exterior boundaries of the exterior walls and the centerline of interior demising walls and in fact vary from the dimensions that would be determined by using the description and definition of the "Unit" set forth in the Declaration (which generally only includes the interior airspace between the perimeter walls and excludes interior structural components). For your reference, the area of the Unit, determined in accordance with those defined unit boundaries, is + or - 855 sq. ft. for units 04. Note that measurements of rooms set forth on this floor plan are generally taken at the greatest points of each given room (as if the room were a perfect rectangle), without regard for any cutouts. Accordingly, the area of the actual room will typically be smaller than the product obtained by multiplying the stated length times width. All dimensions are approximate and may vary with actual construction, and all floor plans and development plans are subject to change.

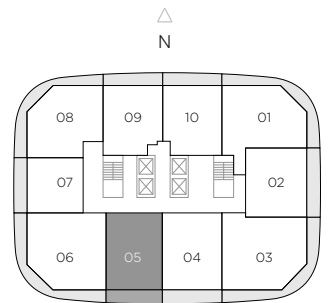
Brickell Heights



RESIDENCE 05

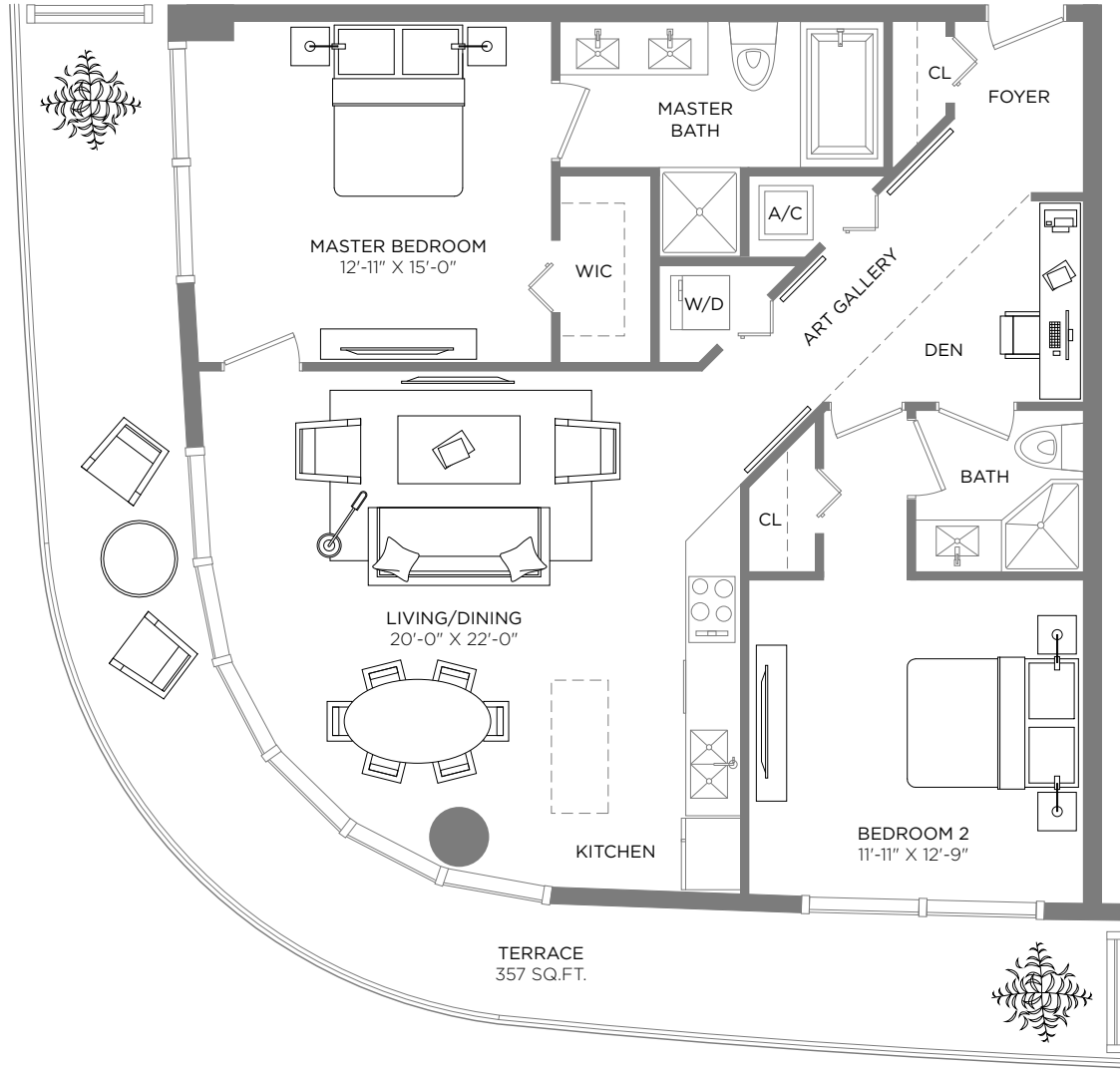
1 BEDROOM / 2 BATHS + DEN

A/C INTERIOR AREA	965 SQ.FT.	89.65 SQ.M.
TERRACE AREA	156 SQ.FT.	14.49 SQ.M.
TOTAL RESIDENCE	1,121 SQ.FT.	104.14 SQ.M.



Stated dimensions are measured to the exterior boundaries of the exterior walls and the centerline of interior demising walls and in fact vary from the dimensions that would be determined by using the description and definition of the "Unit" set forth in the Declaration (which generally only includes the interior airspace between the perimeter walls and excludes interior structural components). For your reference, the area of the Unit, determined in accordance with those defined unit boundaries, is + or - 860 sq. ft. for units 05 Note that measurements of rooms set forth on this floor plan are generally taken at the greatest points of each given room (as if the room were a perfect rectangle), without regard for any cutouts. Accordingly, the area of the actual room will typically be smaller than the product obtained by multiplying the stated length times width. All dimensions are approximate and may vary with actual construction, and all floor plans and development plans are subject to change.

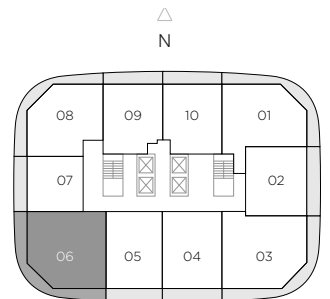
Brickell Heights



RESIDENCE 06

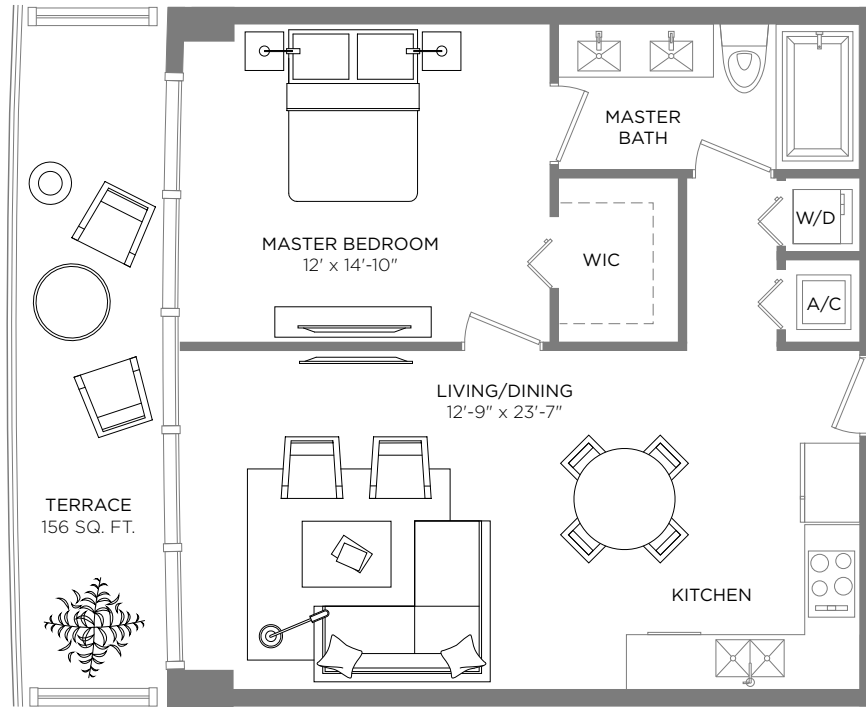
2 BEDROOMS / 2 BATHS + DEN

A/C INTERIOR AREA	1,178 SQ.FT.	109.44 SQ.M.
TERRACE AREA	357 StQ.FT.	33.17 SQ.M.
TOTAL RESIDENCE	1,535 SQ.FT.	142.61 SQ.M.



Stated dimensions are measured to the exterior boundaries of the exterior walls and the centerline of interior demising walls and in fact vary from the dimensions that would be determined by using the description and definition of the "Unit" set forth in the Declaration (which generally only includes the interior airspace between the perimeter walls and excludes interior structural components). For your reference, the area of the Unit, determined in accordance with those defined unit boundaries, is + or - 1,063 sq. ft. for units 06 Note that measurements of rooms set forth on this floor plan are generally taken at the greatest points of each given room (as if the room were a perfect rectangle), without regard for any cutouts. Accordingly, the area of the actual room will typically be smaller than the product obtained by multiplying the stated length times width. All dimensions are approximate and may vary with actual construction, and all floor plans and development plans are subject to change.

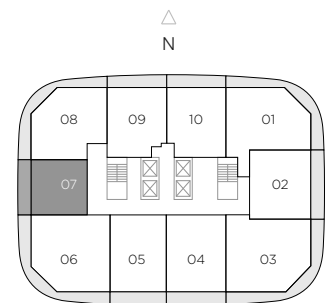
Brickell Heights



RESIDENCE 07

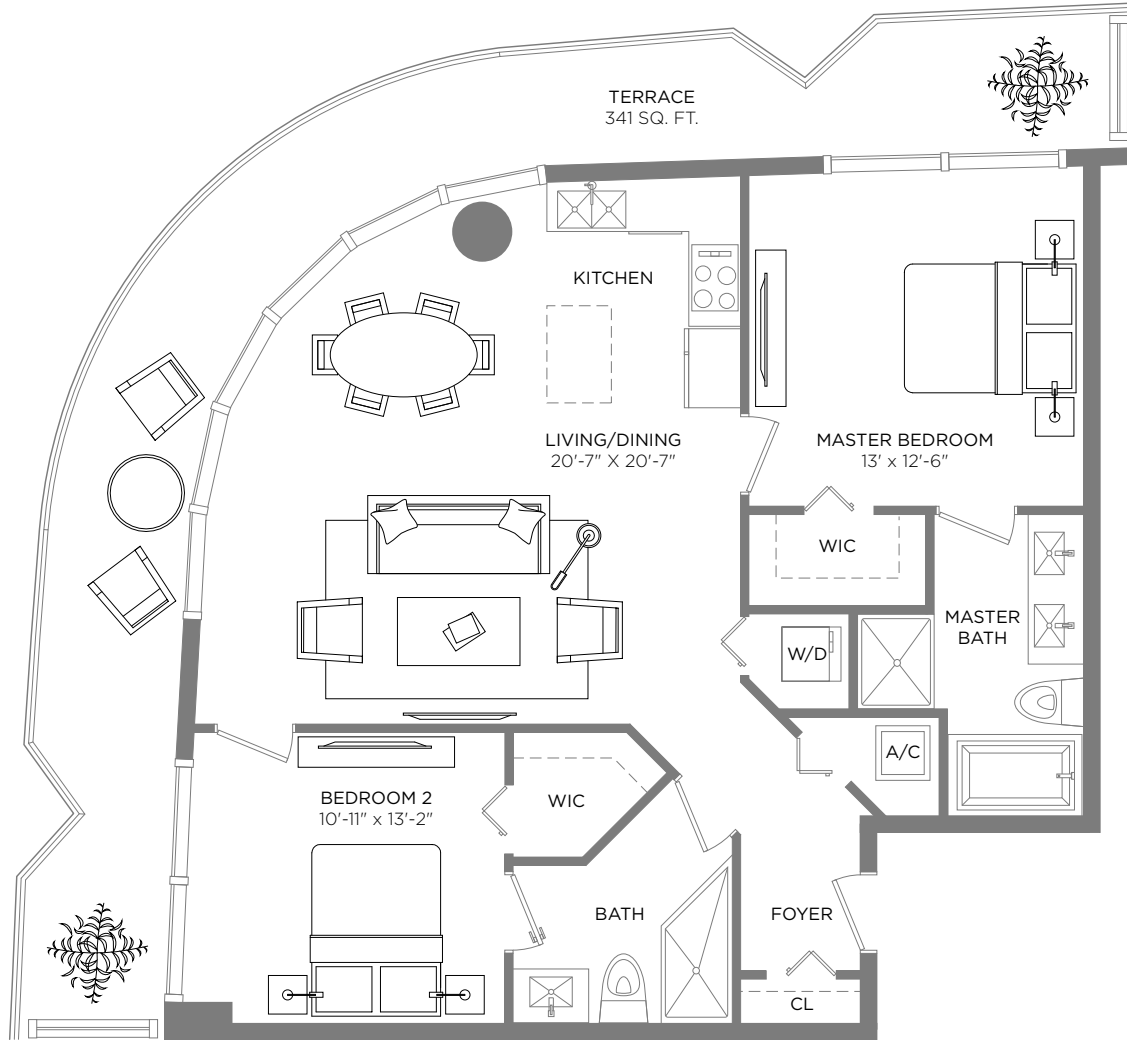
1 BEDROOM / 1 BATH

A/C INTERIOR AREA	693 SQ.FT.	64.39 SQ.M.
TERRACE AREA	156 SQ.FT.	14.49 SQ.M.
TOTAL RESIDENCE	849 SQ.FT.	78.88 SQ.M.



Stated dimensions are measured to the exterior boundaries of the exterior walls and the centerline of interior demising walls and in fact vary from the dimensions that would be determined by using the description and definition of the "Unit" set forth in the Declaration (which generally only includes the interior airspace between the perimeter walls and excludes interior structural components). For your reference, the area of the Unit, determined in accordance with those defined unit boundaries, is + or - 643 sq. ft. for units 07. Note that measurements of rooms set forth on this floor plan are generally taken at the greatest points of each given room (as if the room were a perfect rectangle), without regard for any cutouts. Accordingly, the area of the actual room will typically be smaller than the product obtained by multiplying the stated length times width. All dimensions are approximate and may vary with actual construction, and all floor plans and development plans are subject to change.

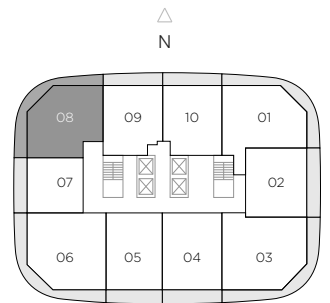
Brickell Heights



RESIDENCE 08

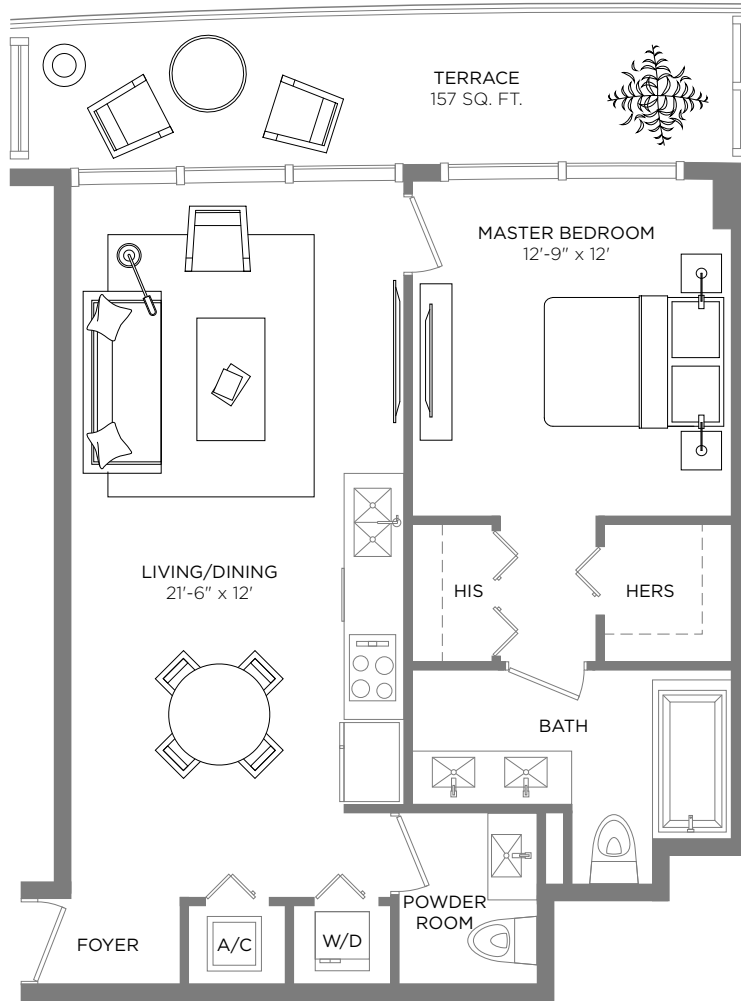
2 BEDROOMS / 2 BATHS

A/C INTERIOR AREA	1,058 SQ.FT.	98.29 SQ.M.
TERRACE AREA	341 SQ.FT.	31.68 SQ.M.
TOTAL RESIDENCE	1,399 SQ.FT.	129.8 SQ.M.



Stated dimensions are measured to the exterior boundaries of the exterior walls and the centerline of interior demising walls and in fact vary from the dimensions that would be determined by using the description and definition of the "Unit" set forth in the Declaration (which generally only includes the interior airspace between the perimeter walls and excludes interior structural components). For your reference, the area of the Unit, determined in accordance with those defined unit boundaries, is + or - 956 sq. ft. for units 08. Note that measurements of rooms set forth on this floor plan are generally taken at the greatest points of each given room (as if the room were a perfect rectangle), without regard for any cutouts. Accordingly, the area of the actual room will typically be smaller than the product obtained by multiplying the stated length times width. All dimensions are approximate and may vary with actual construction, and all floor plans and development plans are subject to change.

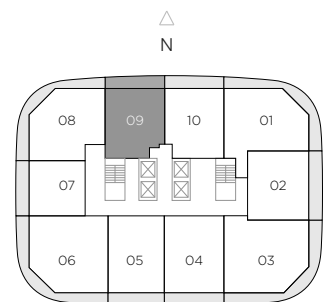
Brickell Heights



RESIDENCE 09

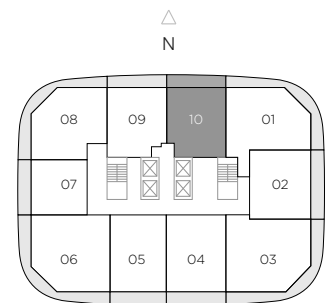
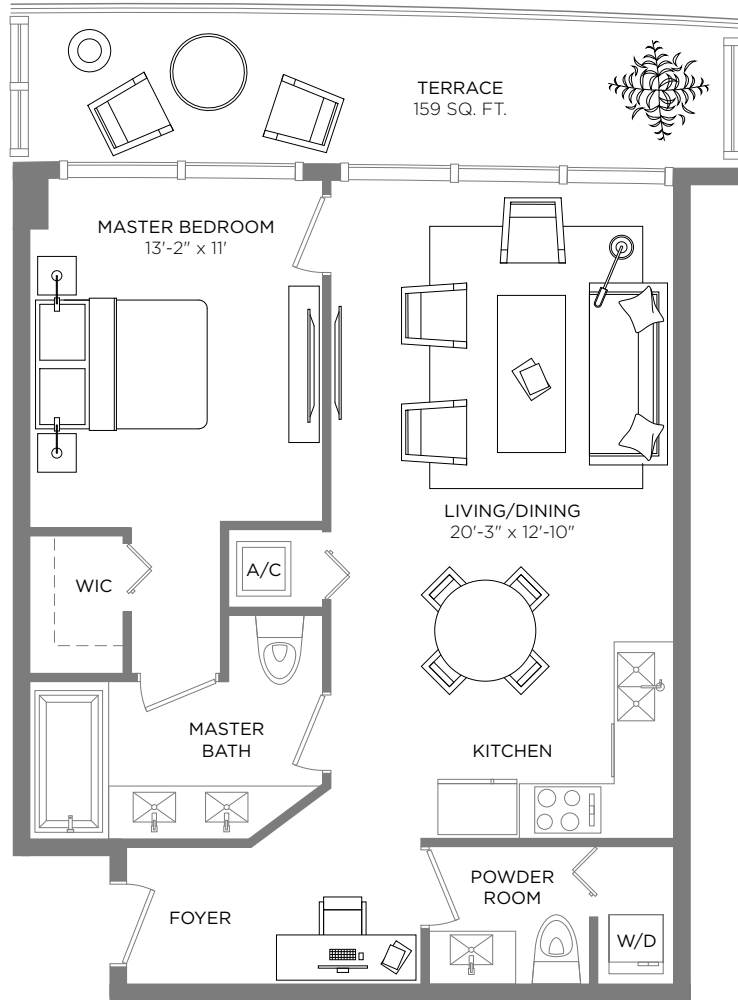
1 BEDROOM / 1.5 BATHS

A/C INTERIOR AREA	844 SQ.FT.	78.41 SQ.M.
TERRACE AREA	157 SQ.FT.	14.59 SQ.M.
TOTAL RESIDENCE	1,001 SQ.FT.	93 SQ.M.



Stated dimensions are measured to the exterior boundaries of the exterior walls and the centerline of interior demising walls and in fact vary from the dimensions that would be determined by using the description and definition of the "Unit" set forth in the Declaration (which generally only includes the interior airspace between the perimeter walls and excludes interior structural components). For your reference, the area of the Unit, determined in accordance with those defined unit boundaries, is + or - 723 sq. ft. for units 09. Note that measurements of rooms set forth on this floor plan are generally taken at the greatest points of each given room (as if the room were a perfect rectangle), without regard for any cutouts. Accordingly, the area of the actual room will typically be smaller than the product obtained by multiplying the stated length times width. All dimensions are approximate and may vary with actual construction, and all floor plans and development plans are subject to change.

Brickell Heights



RESIDENCE 10

1 BEDROOM / 1.5 BATHS

A/C INTERIOR AREA	919 SQ.FT.	85.37 SQ.M.
TERRACE AREA	159 SQ.FT.	14.77 SQ.M.
TOTAL RESIDENCE	1,078 SQ.FT.	100.14 SQ.M.

Stated dimensions are measured to the exterior boundaries of the exterior walls and the centerline of interior demising walls and in fact vary from the dimensions that would be determined by using the description and definition of the "Unit" set forth in the Declaration (which generally only includes the interior airspace between the perimeter walls and excludes interior structural components). For your reference, the area of the Unit, determined in accordance with those defined unit boundaries, is + or - 710 sq. ft. for units 10. Note that measurements of rooms set forth on this floor plan are generally taken at the greatest points of each given room (as if the room were a perfect rectangle), without regard for any cutouts. Accordingly, the area of the actual room will typically be smaller than the product obtained by multiplying the stated length times width. All dimensions are approximate and may vary with actual construction, and all floor plans and development plans are subject to change.